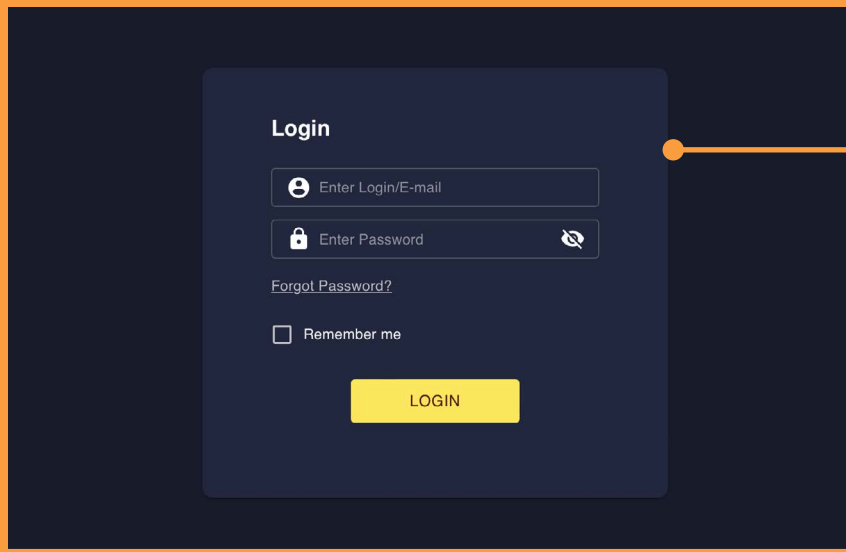




**POWERPOD 2 QUICK USER GUIDE
FOR AC-COUPLED SOLAR SYSTEMS**





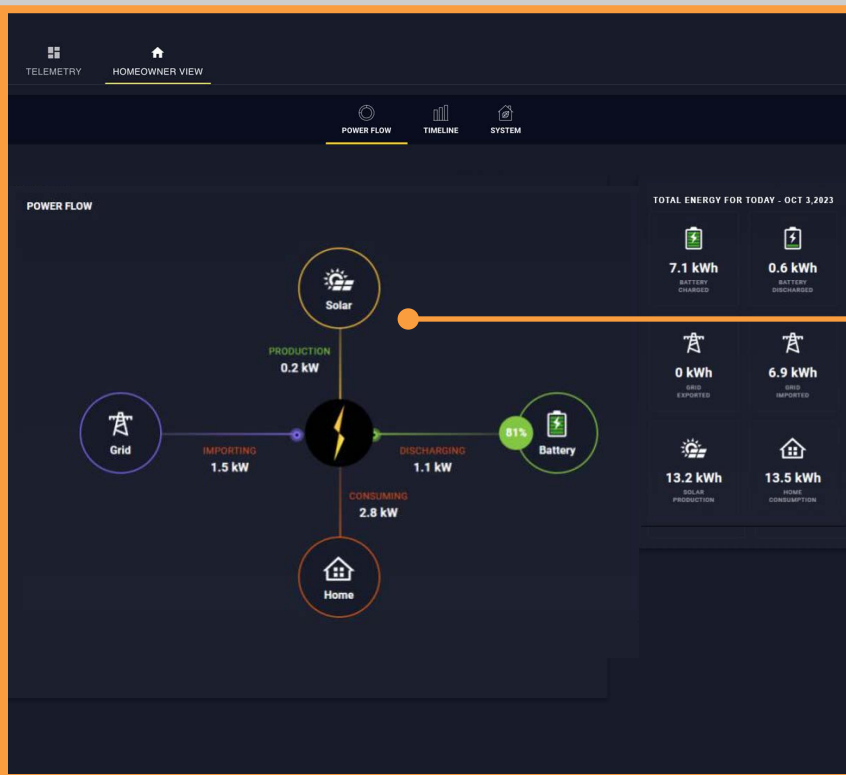
CREATE YOUR LOGIN

Dashboard:

You will receive a welcome email with a link to set up your username and password. You can access the PowerPod 2 portal at dashboard.electriqpower.com.

Mobile App:

Download the Electriq Power mobile app.

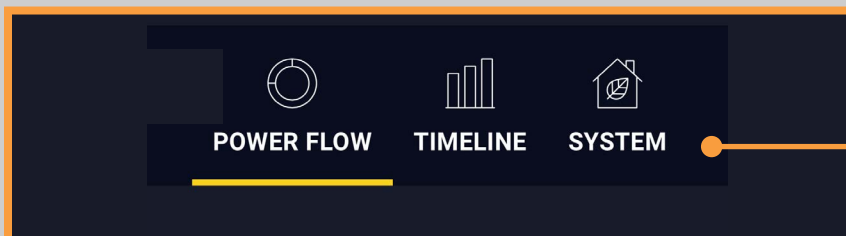


YOUR POWER FLOW

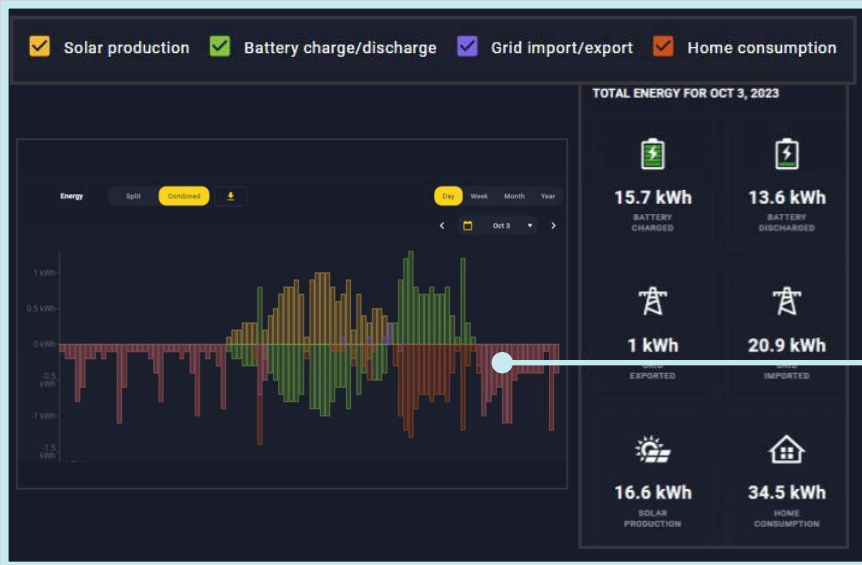
This view shows live readings from your solar panels, the PowerPod 2, your home, and the grid. You will see exactly where your energy is coming from and where it's going. You will also notice the battery's current state of charge.



The AC-Coupled Power Flow view readings are Net values of Production (Solar) minus Consumption (Home). If the result is positive it is shown as NET Solar and if the result is negative it is shown as NET Consumption on the graph.

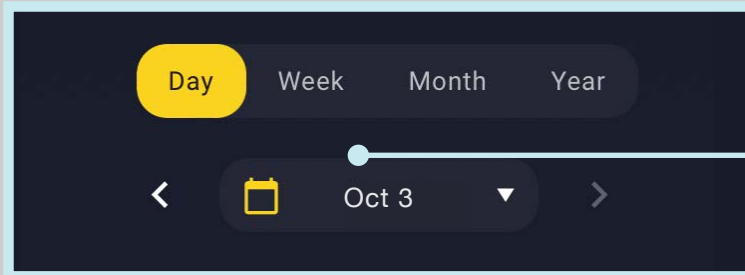


You can easily switch between Power Flow, Timeline, and System views.



VIEW YOUR ENERGY GENERATION AND USAGE IN TIMELINE VIEW

The AC-Coupled Timeline view solar readings are NET Values. We show the NET value of Production (Solar) minus Consumption (Home). If the result is positive it is shown as NET Solar and if the result is negative it is shown as NET Consumption on the graph.

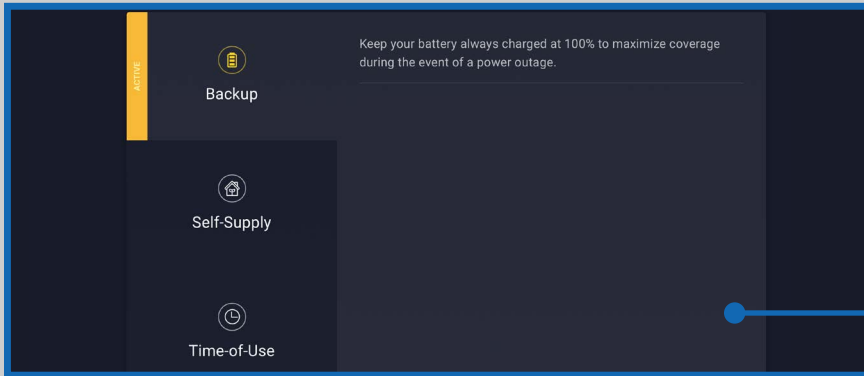


Selectors allow you to view historical performance. Choose the daily, weekly, monthly, or yearly view.



The AC-coupled PowerPod 2 is capable of starting from solar even after the batteries are fully depleted from powering the home during a power outage.

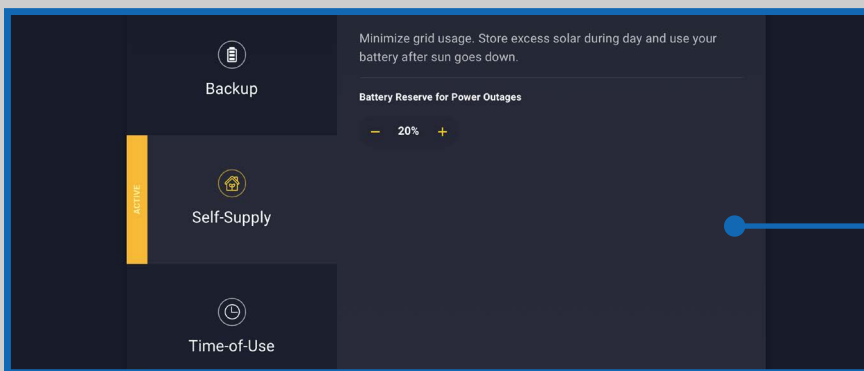
By viewing historical performance over a period of time, you will begin to understand trends, and set benchmarks for future energy activity



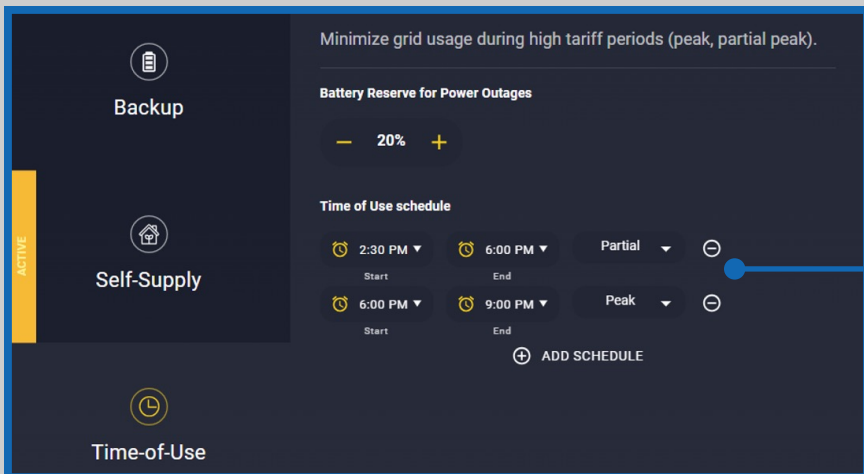
CONFIGURE YOUR SYSTEM MODE TO YOUR NEEDS IN SYSTEM VIEW

Choose the system mode that best meets the needs of your home.

Backup Mode keeps your battery charged at 100% to maximize coverage in the event of a power outage.



Self-Supply minimizes or eliminates grid energy usage by allowing you to use stored energy when solar production is less than home consumption. You may also easily adjust the battery's reserve level to ensure you have a minimum amount to power your home during power outages.



Time-of-Use (ToU) allows you to optimize your system when grid energy costs are at the highest rates.

Peak Schedule: Evenly discharges the battery up to reserve percentage during 'peak' periods.

Partial Schedule: Discharges battery based on home consumption needs.

AC-Coupled systems calculate a NET solar value as the system does not differentiate solar production from home consumption. Consult the complete user manual for important details about this function.

ACCESS ADDITIONAL INFORMATION ABOUT YOUR AC-COUPLED SYSTEM



Safety: Do not attempt to service the battery. It contains no user-serviceable parts. Tampering with or opening the battery will void the warranty.



Electriq Power PowerPod 2 User Manual: You may download a complete PowerPod 2 user manual at electriqpower.com. Refer to this document for important information on troubleshooting, warranty information, and FAQ's.



Support: For technical support, contact your program provider or authorized installer. You may also contact the customer support team for the PowerPod 2 battery at support@electriqpower.com.